

KEY TO ABBREVIATIONS

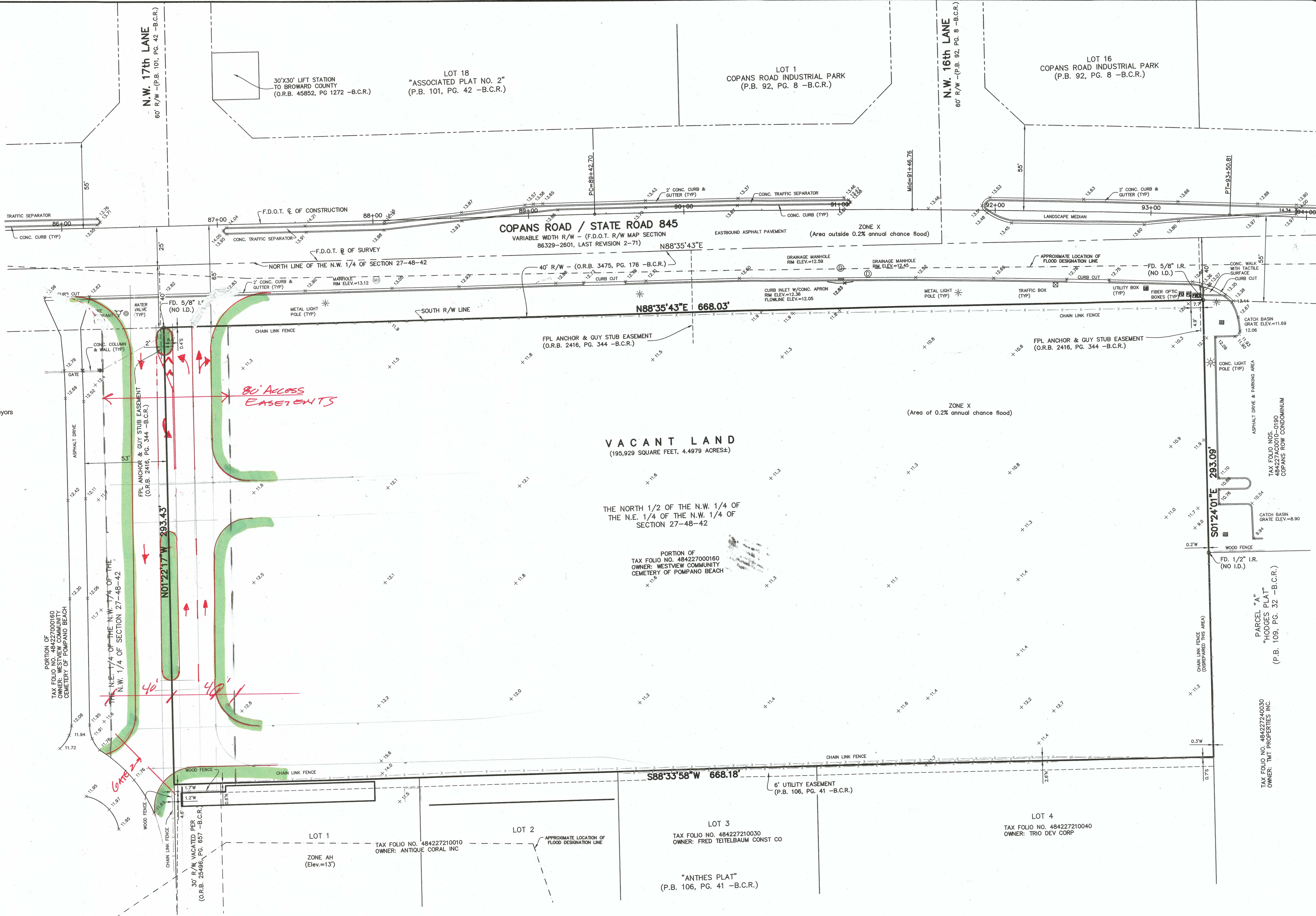
(Some or all may appear hereon)

- ALTA = American Land Title Association
B.C.R. = Broward County Public Records
C = Centerline
CCR = Certified Corner Record
CMP = Corrugated Metal Pipe
(D) = Per Record Deed
I.D. = Identification
INV. = Invert
R = Radius
Δ = Central Angle
L = Arc Length
FD. = Found
F.D.O.T. = Florida Department of Transportation
HDPE = High Density Polyethylene
I.D. = Identification
I.P. = Iron Pipe
I.R. = Iron Rod
LB = Licensed Business
NSPS = National Society of Professional Surveyors
(Mcl.) = McLaughlin Engineering
MP = Metal Pipe
O.R.B. = Official Records Book
(P) = Per Record Plat
P.B. = Plat Book
PG. = Page
PVC = Polyvinyl Chloride
PRM = Permanent Reference Monument
PSM = Professional Surveyor & Mapper
RCP = Reinforced Concrete Pipe
R/W = Right-of-Way
(S) = As Surveyed in the field
TOB = Top of Baffle
TYP. = Typical
W/ = With

SYMBOLS LEGEND

(Some or all may appear hereon)

- Air Conditioner
□ AT&T Box
□ Cable Riser
□ Catch Basin
□ Check Valve
□ Clean Out
□ Concrete Light Pole
□ Drainage Manhole
□ Electric Box
□ Electric Meter
□ Existing Elevation
□ Fiber Optic
□ Fire Hydrant
□ Guy Anchor
□ Irrigation Valve
□ Manhole
□ Metal Light Pole
□ Pedestrian Signal Pole
□ Post
□ Reducer
□ Sanitary Sewer Manhole
□ Sign
□ Tactile Surface
□ Telephone Box
□ Telephone Manhole
□ Traffic Signal Box
□ Traffic Signal Pole
□ Water Meter
□ Water Valve
□ Wood Utility Pole
□ Wood Utility Pole w/Light



4577 Nob Hill Road, Suite 102
Sunrise, FL 33351
www.suntecheng.com
Certificate of Auth. #7097/LB 7019
Phone (954) 777-3123
Fax (954) 777-3114

Sun-Tech
Engineering, Inc.
Engineers - Planners - Surveyors

STE

REVISIONS		DESCRIPTION
NO.	DATE	

ALTA/NSPS LAND TITLE SURVEY
OUR REAL ESTATE LLC
THE NORTH 1/2 OF THE NW 1/4 OF THE NE 1/4 OF
THE NW 1/4 OF SECTION 27-48-42
CITY OF POMPAHO BEACH, BROWARD COUNTY, FLORIDA

DRAWN BY:
VALENTINE

JOB NUMBER
20-3995

SCALE
1" = 30'

SHEET No.
S2